

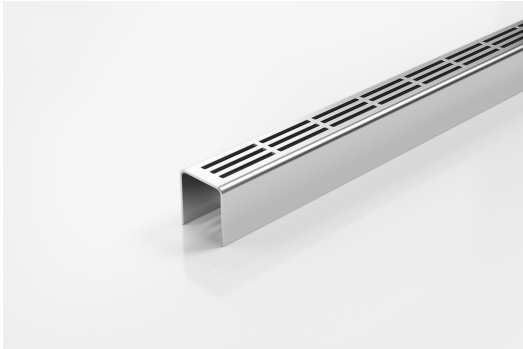


ARCHITECTURAL
GRATES + DRAINS



38PS40

Linear Drain



This is our Punched Slot grate for use with the 38G90 and 38G100 Special Assembly drain.

A 38mm wide UPVC channel is connected via downpipes at 200mm intervals to sockets in a 90mm or 100mm drain below. This allows the channel to be installed level while the drainpipe is given sufficient fall to be self-cleaning.

Please be aware that depending on the installation environment, for a pool installation or close to a surf beach, you may need to have your stainless steel grates electropolished.

This unique drainage system was recognised for its innovation by a DesignMark at the Australian International Design Awards.

Code 38PS40

Range Special Assembly

Grate Style PS

Category Components

Channel Material Stainless Steel

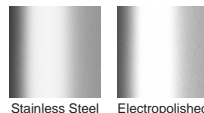
Steel Grade 316

Grates longer than 1500mm supplied in sections. Tile Inserts longer than 1200mm supplied in sections. Channels over 3000mm supplied in sections with joiner. +/-2mm tolerance on dimensions.

SPECIFICATIONS + DIMENSIONS

Channel Width	38mm
Channel Depth	40mm
Length(s)	900mm 1000mm 1200mm 1500mm
Outlet Size	N/A

STORMTECH COLOUR FINISHES



Electroplate finishes subject to natural variation with time and local environment. Factors such as pools/surf beaches may require electropolishing. Contact us for suitability.

PRODUCT APPLICATIONS

- Bathroom Drainage
- Balcony Drainage
- Commercial Drainage
- Courtyard / Patio Drainage
- Pool and Spa Area Drainage
- Paved Area Drainage
- Shower Drainage
- Special Needs Drainage
- Threshold Drainage
- Suspended Slab Drainage
- Wet Area Drainage

Copyright © Stormtech Pty Ltd. Patent 733361. Drawings not to scale, please use dimensions shown. Downloaded 14/04/2026 (please check for updates)



Visit stormtech.com.au
for tools + inspiration.

Phone **1300 653 403**

Email info@stormtech.com.au