

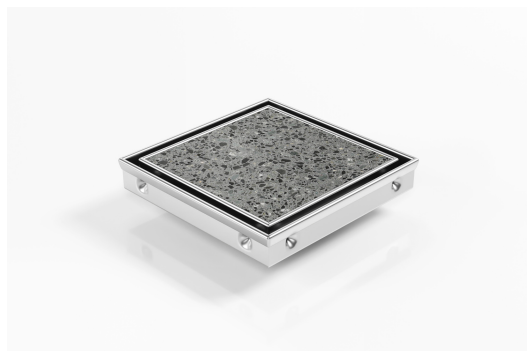


ARCHITECTURAL  
GRATES + DRAINS



# SQP100Ti20DN50

## Square Floor Waste



The SQP100Ti is a premium floor waste drain.

Manufactured from 316 marine grade stainless steel it features a premium tile insert drain and will suit a tile thickness of up to 12mm.

The SQP100Ti can be combined with the 100Ti or 65Ti linear drainage units for a unified look.

**Code** SQP100Ti20DN50

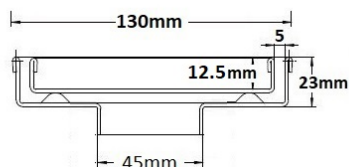
**Range** Square

**Grate Style** Ti

**Category** Square Floor Waste

**Channel Material** Stainless Steel

**Steel Grade** 316

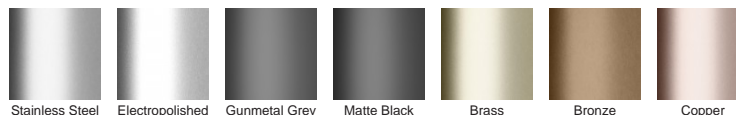


Grates longer than 1500mm supplied in sections. Tile Inserts longer than 1200mm supplied in sections. Channels over 3000mm supplied in sections with joiner. +/-2mm tolerance on dimensions.

### SPECIFICATIONS + DIMENSIONS

<b>Channel Width</b>	130mm - 130mm
<b>Channel Depth</b>	23mm
<b>Length(s)</b>	As Required
<b>Outlet Size</b>	DN50

### STORMTECH COLOUR FINISHES



Electroplate finishes subject to natural variation with time and local environment. Factors such as pools/surf beaches may require electropolishing. Contact us for suitability.

### PRODUCT APPLICATIONS

- |                            |                         |
|----------------------------|-------------------------|
| Bathroom Drainage          | Paved Area Drainage     |
| Balcony Drainage           | Shower Drainage         |
| Commercial Drainage        | Special Needs Drainage  |
| Courtyard / Patio Drainage | Threshold Drainage      |
| Driveway Drainage          | Suspended Slab Drainage |
| Pool and Spa Area Drainage | Wet Area Drainage       |

Copyright © Stormtech Pty Ltd. Patent 733361. Drawings not to scale, please use dimensions shown. Downloaded 12/04/2026 (please check for updates)



Visit [stormtech.com.au](http://stormtech.com.au)  
for tools + inspiration.

Phone **1300 653 403**

Email [info@stormtech.com.au](mailto:info@stormtech.com.au)